

DRAWING NUMBER
53/170

170

DRAWING NUMBER

DRAWING NUMBER

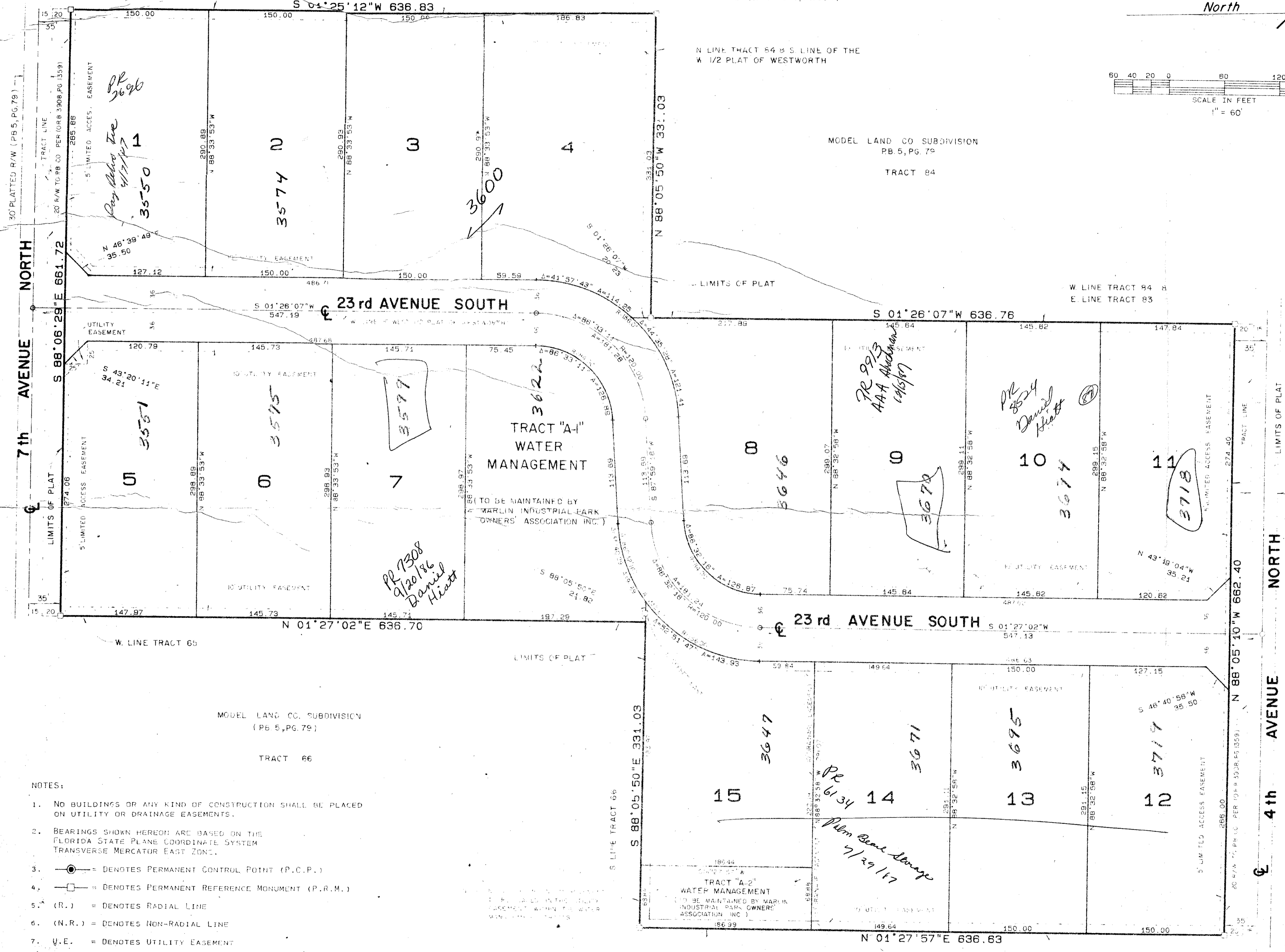
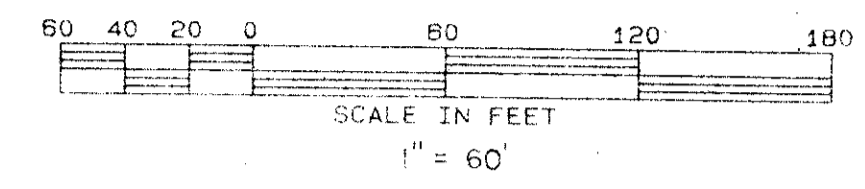
DRAWING NUMBER

PLAT OF WESTWORTH
PB 13, PG. 47

LIMITS OF PLAT

E LINE OF THE W 1/2 PLAT OF WESTWORTH R/W ABANDONED PER (ORB 1864, PG 1273)
EASEMENTS ABANDONED PER (ORB 4646, PG. 604)

North



NOTES:

1. NO BUILDINGS OR ANY KIND OF CONSTRUCTION SHALL BE PLACED ON UTILITY OR DRAINAGE EASEMENTS.
2. BEARINGS SHOWN HEREON ARE BASED ON THE FLORIDA STATE PLANE COORDINATE SYSTEM TRANSVERSE MERCATOR EAST ZONE.
3. = DENOTES PERMANENT CONTROL POINT (P.C.P.)
4. = DENOTES PERMANENT REFERENCE MONUMENT (P.R.M.)
5. (R.) = DENOTES RADIAL LINE
6. (N.R.) = DENOTES NON-RADIAL LINE
7. U.E. = DENOTES UTILITY EASEMENT
8. L.A.E. = DENOTES LIMITED ACCESS EASEMENT
9. D.E. = DENOTES DRAINAGE EASEMENT
10. WHERE UTILITY AND DRAINAGE EASEMENTS INTERSECT THE DRAINAGE EASEMENT SHALL TAKE PRECEDENCE.
11. NO STRUCTURES, TREES OR SHRUBS SHALL BE PLACED ON DRAINAGE EASEMENTS.
12. APPROVAL OF LANDSCAPING ON UTILITY EASEMENTS OTHER THAN WATER AND SEWER SHALL BE ONLY WITH THE APPROVAL OF ALL UTILITIES OCCUPYING SAME.

0468-000

Per 82-114 → 161.00
Per 1000 \$
pay to 22

53/170

ADD BY
CHECKED BY BT

PLAT OF
MARLIN INDUSTRIAL PARK
(A P.I.D.)

WILLIAM G. WALLACE, INC.
CONSULTING ENGINEERS, LAND PLANNERS & SURVEYORS
920 N. TERRACE AT LAKE PARK, EL ST. 111, W. PALM BEACH, FL 33409

FIELD	FG	JOB NO.	84-971	PLAT NO.	61-76
OFFICE	RR	DATE	MAY, 1985	DWG. NO.	84-971
CKD	DJM	REF		SHEET	3 OF 5